

**Mitsubishi Electric Corporation
Product Guidance for the China Compulsory
Product Certification (CCC) System**

**关于中国强制性产品认证制度（CCC认证）
三菱电机产品的指导**



Mitsubishi Electric Corporation Product Guidance for the China Compulsory Product Certification (CCC) System

关于中国强制性产品认证制度（CCC认证）三菱电机产品的指导

Index 目录

Introduction	1
序 言	
1. China Compulsory Certification (CCC) System Overview	
中国强制性产品认证制度 (CCC认证) 的概要	
① Background	2
经纬	
② Transition Schedule	2
过渡日程	
③ New System Organization	3
CCC组织机构图	
④ Certification labeling	4
认证标记	
⑤ Primary Compulsory Certification Implementation Product List	
Product Application Sphere	5
第一批实施强制性产品认证的产品目录	
⑥ How to Request CCC Acquisition, Continuation, Exemption	
申请CCC认证和维护以及申请免除CCC认证的方法	
1) How to acquire certification	6
申请CCC认证的方法	
2) How to continue certification	7
维持CCC认证的方法	
3) How to apply for exemption	7
申请免除CCC认证的方法	
2. Mitsubishi Electric Corporation Industrial Automation product	
CCC System target/non-target judgment and response status	8
三菱电机工控产品的CCC认证对象/非对象的判断和对应情况	

Introduction

With the admission of China into the World Trade Organization (WTO), that country moved to revise and unify the CCIB (China Commodity Inspection Bureau) system used to deal with imported and exported products to date (the certification system based on the "Export/Import Product Inspection Law" and the "Imported Product Safety and Quality Licensing System Implementation Regulations"), as well as the China Commission for Conformity Certification of Electrical Equipment (CCEE) system (the certification based on the Product Quality Certification Control Regulations) applied to products distributed domestically in China. As a result of this change, the China Compulsory Certification (CCC) System was enacted from May 1, 2002, with the former CCIB and CCEE certification systems discontinued as of April 30, 2003.

In accordance with these revisions, while it was possible for products targeted under this system to be imported into China, exported out of China or sold on the Chinese domestic market under the CCIB or CCEE labels through April 30, 2003, effective May 1, 2003 the importing into China, exporting from China or selling on the Chinese domestic market of products without the CCC label is no longer possible.

These guidance materials are designed furnish a summary explanation of the China Compulsory Certification (CCC) System, while also commenting on our judgment of the application of this system to Mitsubishi Electric Industrial Automation products and the status of the Company's response to this system at the present point in time.

These materials have been prepared for your reference and use, and we hope that you will find them informative and beneficial.

序言

伴随着中国加入WTO (世界贸易组织), 根据对以前运用在进出口产品的CCIB认证 (以「进出口商品检查法」和「进口产品安全品质许可制度的实施细则」为基础的认证制度) 以及对国内流通产品认证的CCEE认证 (以「产品品质认证管理条例」为基础的认证制度) 的重新讨论, 决定从2002年5月1日起实行中国强制性产品认证制度 (CCC: China Compulsory Certification) 的一元化制度, 原有旧制度的CCIB认证以及CCEE认证到2003年4月30日为止同时废止。

因此, 2003年4月30日之前持有CCIB和CCEE标志的对象产品可以向中国进出口以及在中国国内的销售, 但自2003年5月1日起凡未施加CCC标记的产品不得向中国进出口以及不能在中国国内销售。

本指导解说了中国强制产品认证制度 (CCC认证) 的概要和其对三菱电机工控产品的适用判断以及弊司现在的对应情况。

请参照此介绍

1. China Compulsory Certification (CCC) System Overview

① Background

The conventional approach to certification of product safety in China has consisted of two systems: (1) The CCIB (China Commodity Inspection Bureau) system used by the China National Import/Export Product Inspection Bureau (SACI) to target export and import products (the certification system based on the “Export/Import Product Inspection Law” and the “Imported Product Safety and Quality Licensing System Implementation Regulations”); and (2) the China Commission for Certification of Electrical Equipment (CCEE) Certification System (the certification based of the Product Quality Certification Control Regulations) applied to products distributed domestically in China.

With the acceptance of China for WTO membership (November 2001), the organizations in charge of the CCIB and CCEE certification systems have been integrated, with unification under a new compulsory product certification system (hereafter referred to as the CCC (China Compulsory Certification) System supervised by the General Administration of Quality Supervision, Inspection and Quarantine of the People’s Republic of China (AQSIQ).

The CCC System was partially implemented from May 2002, followed by full implementation from May of 2003. Target items failing to gain certification under the CCC System can no longer be imported into China, exported from China or sold on the Chinese domestic market. (From May 1, 2003, in other words, displaying of the “CCIB” or “CCEE” labels is no longer acceptable.)

1. 中国强制性产品认证制度（CCC认证）的概要

① 经纬

目前,在中国实施的是中国国家进出口商品检验局（SACI）以进出口产品为对象的「CCIB认证」（以「进出口商品检查法」和「进口商品安全品质许可制度的实施细则」为基础的认证)和中国电工产品认证委员会（CCEE）以在中国国内流通的产品为对象的「CCEE认证」（以「产品品质认证管理条例」为基础的认证制度）这两种旧的安全性认证。

伴随着中国加入WTO（2001年11月），CCIB认证和CCEE认证进行组织合并，由中国国家质量监督检验检疫总局（AQSIQ）统一监督管理实行新强制性产品认证制度（以下简称CCC认证）。

CCC认证从2002年5月开始部分实施，从2003年5月开始完全实施，没有CCC认证的对象产品不得以向中国进出口以及在中国国内销售。（自2003年5月1日起废止CCIB和CCEE标志）

CCIB	China Commodity Inspection Bureau
CCEE	China Commission for Conformity Certification of Electrical Equipment
CCC	China Compulsory Certificatio

② Transition Schedule

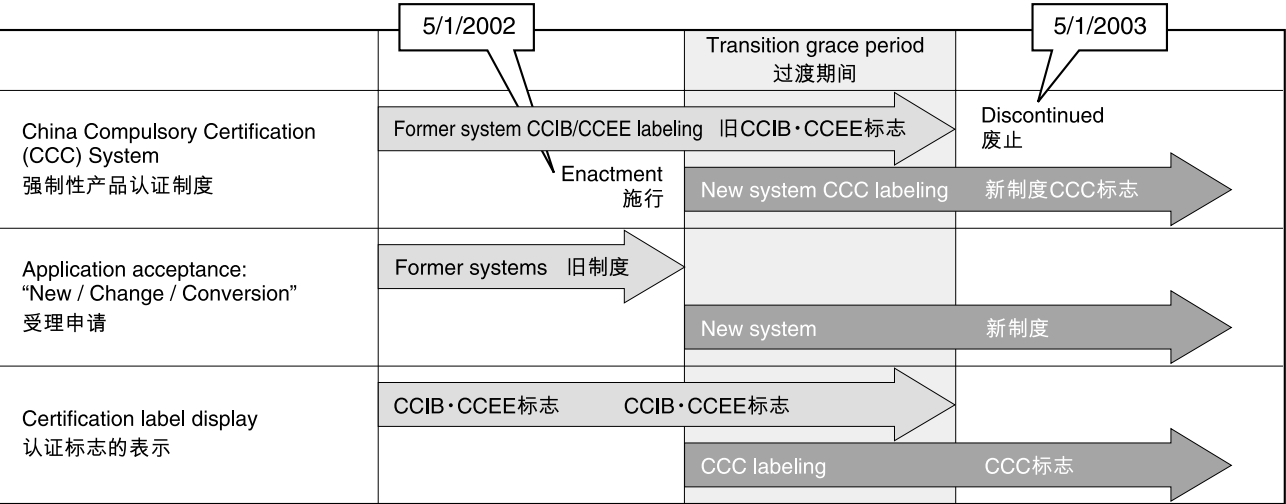
The CCC System targets 132 items under 19 categories (within the product application sphere of the Primary Compulsory Certification Implementation Product List). Because there is equipment targeted under the former systems that is not included in the new system, as well as equipment not included in the former systems that is targeted in the new system, you are advised to proceed with care in this area.

For equipment targeted under the CCC System, both conversion application from the old system and new application procedures are required.

② 过渡日程

CCC认证对象产品分19个大类132个品种(第一次实施强制性认证产品目录的产品适应范围),需注意的是旧制度中的对象产品变成对象外产品,旧制度中的对象外产品成了对象产品的情况。

对于成为CCC认证对象的产品,必须进行从旧制度转换新制度及新的申请。

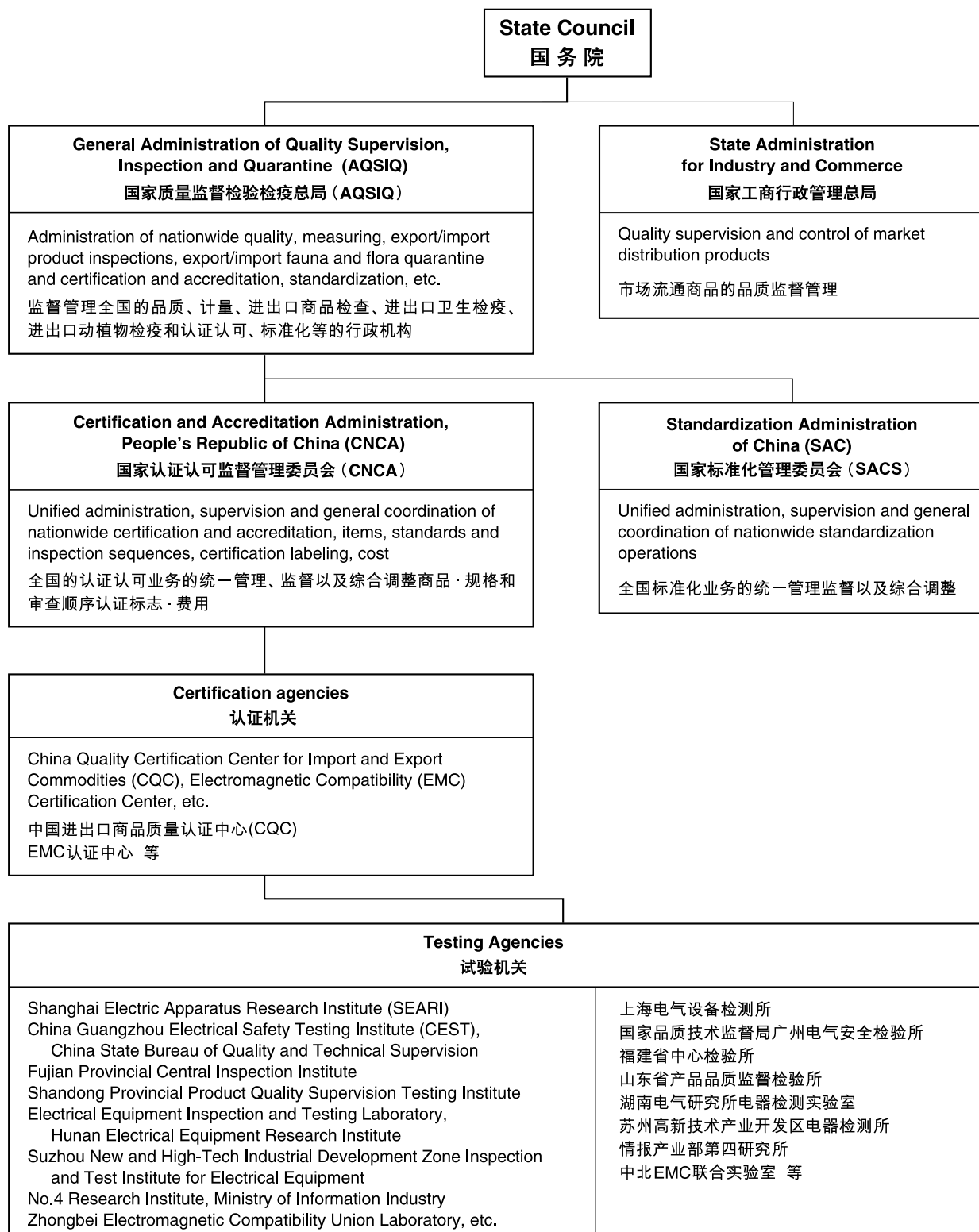


③ New System Organization

China inaugurated the General Administration of Quality Supervision, Inspection and Quarantine (AQSIQ) for the purpose of implementing the CCC System, with the Certification and Accreditation Administration (CNCA) established under this body to oversee all certification and accreditation operations nationwide.

③ CCC组织机构图

为了更好的实施CCC认证，新成立了中国国家质量监督检验检疫总局（AQSIQ）及统括全国的各种认证许可业务的国家认证认可监督管理委员会（CNCA）。



④ Certification Labeling

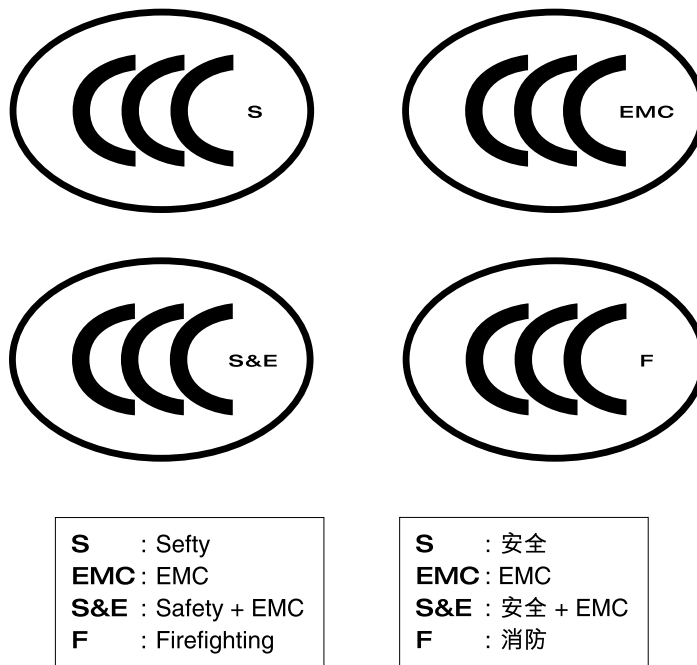
Following certification by certification agencies designated by the Certification and Accreditation Administration (CNCA), application is made for use of certification labeling, with use of the certification labels shown in the diagram made possible.

Certification labels display the certification symbol on the right side of the basic label (the CCC portion).

④ 认证标志

接受由国家认证认可监督管理委员会（CNCA）指定的认证机关的认证以后，提出使用认证标记的申请，便可以使用下记认证标记。

认证标志的基本标记（CCC部分）的右侧表示认证种类。



⑤ Primary Compulsory Certification Implementation Product List Product Application Sphere

The product application sphere of the Primary Compulsory Certification Implementation Product List is based on CCIB items (104 items), CCEE items (107 items) and CEMC items (EMC compulsory certification items), with 132 items (in 19 categories) so designated on December 3, 2001.

⑤ 第一次实施强制性认证的产品目录

第一次实施强制性认证产品目录的产品适用范围是以CCIB品种（104种产品）和CCEE品种（107种产品）以及CEMC品种（EMC强制认证品种）为基础，2001年12月3日指定的132个品种（19个分类）的产品。

Cate-gories	Product list	
1	Electric wire and cable (5 items)	
2	Switches, protection and wiring use electric machinery equipment (6 items)	
3	Low-voltage electric equipment (9 items)	Compulsory certification implementation regulations
	Breakers (including RCCB, RCBO and MCB)	CNCA-01C-011: 2001 (Breakers and control equipment) CNCA-01C-012: 2001 (Protective devices) CNCA-01C-010: 2001 (Low-voltage switching equipment) CNCA-01C-013: 2001 (Low-power motors)
	Low-voltage switches (Disconnectors, disconnecting switches, fuse-installed units)	
	Other circuit protection equipment (Protective devices: Current limiters, circuit protection devices, overcurrent protectors, heat protectors, overcurrent relays, low-voltage unit electrical contactors, electric motor starters)	
	Relays (36V<voltage≤1000V)	
	Other switches (Electrical switches, vacuum switches, pressure switches, proximity switches, foot switches, thermal switches, liquid-level switches, push-button switches, limit level switches, tremor switches, temperature switches, stroke switches, conversion switches, automatic conversion switches, knife switches)	
	Other devices (Contactors, electric motor starters, signal lights, auxiliary contact devices, exchange semiconductor electric motor controllers and starters)	
	Short-circuit protectors	
	Fuses	
	Low-voltage switching equipment	
4	Low-power motors (1 item)	
5	Power tools (16 items)	
6	Electric welders (15 items)	
7	Home-use and similar purpose equipment (18 items)	
8	Acoustical equipment (16 items)	
9	Data processing equipment (12 items)	
10	Lighting equipment (2 items)	
11	Communications terminal equipment (9 items)	
12	Vehicles and safety parts (4 items)	
13	Tires (3 items)	
14	Safety glass (3 items)	
15	Farming machinery products (1 item)	
16	Rubber products (1 item)	
17	Medical appliances (7 items)	
18	Firefighting products (3 types)	
19	Firefighting devices (1 item)	

分类	产品目录	
1	电线电缆（共5种）	
2	电路开关及保护或连接用电器装置（共6种）	
3	低压电器（共9种）	强制性认证实施规则
	断路器（包含RCCB RCBO MCB）	CNCA-01C-011: 2001 (断路器和控制设备) CNCA-01C-012: 2001 (整机保护装置)
	低压开关（隔离器 隔离开关 熔断器组合电器）	
	其他电路保护装置（保护器类：限流器 电路保护装置 过流保护器 热保护器 过载继电器 低压机电式接触器 电动机启动器）	
	继电器（36V<电压≤1000V）	
	其他开关（电器开关 真空开关 压力开关 接近开关 脚踏开关 热敏开关 液位开关 按钮开关 限位开关 微动开关 倒顺开关 温度开关 行程开关 转换开关 自动转换开关 刀开关）	
	其他装置（接触器 电动机起动器 信号灯 辅助触头组件 主令控制器 交流半导体电动机控制器和起动器）	
	漏电保护器	
	熔断器	
	低压开关装置	CNCA-01C-010: 2001 (低压开关)
	小功率电动机（共1种）	CNCA-01C-013: 2001 (小功率电动机)
4	电动工具（共16种）	
5	电焊机（共15种）	
6	家庭和类似用途设备（共18种）	
7	音视频设备类（共16种）	
8	信息技术设备（共12种）	
9	照明设备（共2种）	
10	电信终端设备（共9种）	
11	机动车辆及安全附件（共4种）	
12	机动车辆轮胎（共3种）	
13	安全玻璃（共3种）	
14	农机产品（共1种）	
15	乳胶制品（共1种）	
16	医疗机械产品（共7种）	
17	消防产品（共3种）	
18	安全技术防范产品（共1种）	

⑥ How to Request CCC Acquisition, Continuation, Exemption

1) How to acquire certification

There are two methods for applying to acquire certification - the “Basic Application Flow” and the “Conversion Application Flow.”

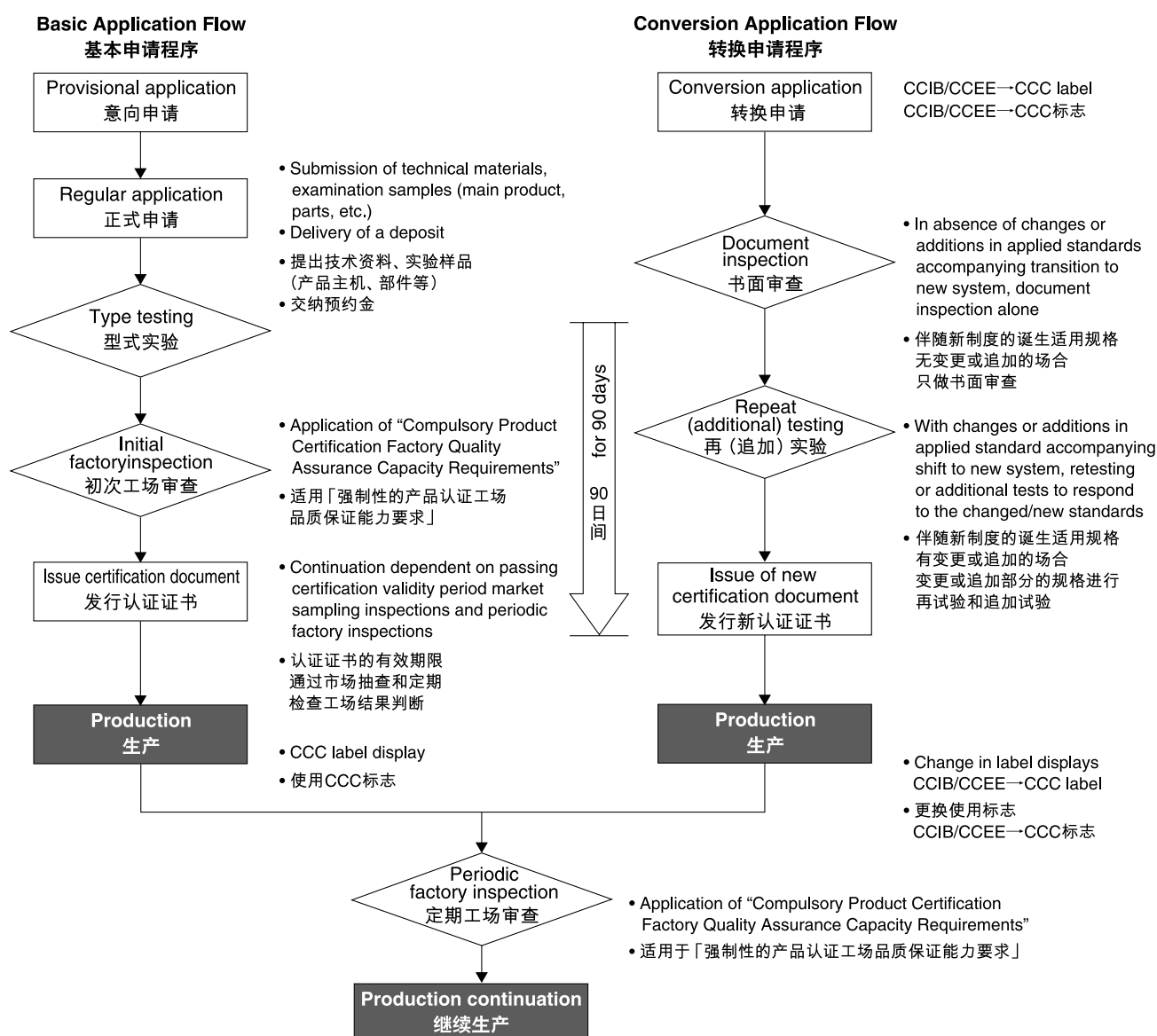
After passing a factory inspection and acquiring certification for the first time, a “state compulsory product certification” will be used. After this, a regular factory inspection must be undergone no less than once per year. Passing this inspection qualifies the company for continued use of the certification label.

⑥ 取得CCC认证和维持、免除申请的方法

1) 申请CCC认证的方法

取得认证的申请分「基本申请程序」和「转换申请程序」两种。

在第一次工场审查中合格得到认证后发行「国家强制性产品认证证书」。其后工场至少每年必须接受1次以上的定期工场审查。此审查合格后才被认为可以继续使用认证标记。



2) How to continue certification

Certification documents are not assigned terms of validity. However, certification does not continue indefinitely, with temporary suspension or cancellation likely to occur if problems occur during periodic factory inspections (once or more yearly), market sampling inspections or other procedures. Because this system is new, there will most likely be changes in the HS code or additional demands for new certification. In view of this reality, it is important to constantly obtain the latest available information.

2) 维持CCC认证的方法

认证证书无有效期。但是，依据每年1次以上的定期工场审查和市场抽查，如发现问题会一时停止和取消资格，并不是无限期的。由于本制度是新的制度，会有变更HS编号或有新的需追加认证的情况，所以要随时掌握最新的信息。

3) How to apply for exemption

Based on Public Notice No. 8 issued by the Certification and Accreditation Administration of the People's Republic of China (CNCA) in May 2002, certain products were recognized as not requiring compulsory product certification procedures, or being eligible for application for exemption from those procedures, based on special circumstances effecting production, exporting and management activities.

Application forms must be submitted for products thought to fall under this category, accompanied by materials capable of demonstrating compliance with the exemption conditions, to obtain accreditation. This must be followed by acquisition of "Compulsory Certification Product Exemption Corroboration."

3) 申请免除CCC认证的方法

根据2002年5月发行的国家认证认可监督管理委员会（CNCA）第8号公告,对于生产出口和经营活动等特殊的状况,可申请免除强制性产品认证。

提出可以证明产品适合免除条件的资料和申请书,经过认可取得「强制性认证产品免除证明」。

<Scope of products eligible for exemption application>

Scope of products not requiring procedures	1) Personal use items carried by foreign embassy, consulate or administrative agency personnel upon entering China (excluding items purchased from the "Country Departure Public Service Company"). 2) Inter-government assistance and gift items. 3) Exhibition display items (articles not for sale). 4) Special-purpose products (military use, etc.). For products not requiring compulsory certification application procedures, there is no need to apply for such compulsory certification document acquirement, and also no requirement to display certification labels.
Scope of products for which procedures may be exempted	5) Products imported and manufactured for scientific research and testing measurements. 6) Parts or materials imported through the consigned fabrication method for installation (of materials, parts or members) into completed items for the purpose of 100-percent exporting upon completion. 7) Products to be wholly exported on the basis of overseas trade contracts (excluding cases when products are partially sold in China, reimported and sold in China, etc.). 8) Imported products required on production lines to inspect technology. 9) Products directly imported or manufactured for the purpose of final product user maintenance or repair. Members supplied for the maintenance and repair of products for which manufacture has already been halted. 10) Products imported and produced for purpose of scientific research and testing measurements. 11) Other special-circumstance products.

<可申请免除办理认证的产品范围>

无需办理强制性认证的产品范围	1) 外国驻华使馆、领事馆、办事机构、入境人员从境外带入境内的自用物品（不含从“出国人员服务公司”购买的物品） 2) 政府间援助、赠送的物品 3) 展览品（非展销品） 4) 特殊用途（军事等目的）的产品 对于不许可要办理强制性认证的产品，无需申请强制性产品认证证书的、也无需加施中国强制性认证标志。
可以免于办理强制性认证的产品范围	5) 为了科研、测试需要进口和生产的 6) 以整机全数出口为目的而用进料或来料加工方式进口的零部件 7) 根据外贸合同、专供出口的产品（不包括该产品有返销国内或内销的） 8) 为考核技术引进生产线需要进口的零部件 9) 直接为最终用户修理为目的进口和生产的、为已停产的产品提供的维修零部件。 10) 为了科学研究 试验测定而进口和生产的 11) 其他特殊情况的产品

<Documents required for exemption application>

1. Formal application form 1) Company profile, explanatory documents. 2) Features of products for which compulsory product certification exemption is desired. 3) Causes and reasons for wishing to apply for exemption, and the basis for that desire (Example: Customs regulations etc.). 4) Name, trademark, volume, specs/type name of products for which application is being made. (Attach list when volume is high. Attach import volume list/month for fabrication-use materials and repair-use equipment.) 5) Declaration of product safety assurance, and acceptance of all safety issues during production and use. 6) Acceptance of full responsibility for truthfulness and legality of materials submitted. Agreement to cooperate in any investigations by the Certification and Accreditation Administration (CNCA) into the authenticity of the materials. 2. Copy of business accreditation 3. Product consistency statement, safety standards corresponding to that product, corresponding test report (copies acceptable, reports accepted from either China or abroad, or from the manufacturer's own testing laboratory). 4. Import accreditation certificate (when required, copies acceptable). 5. Authorized value certification (when required, copies acceptable). 6. Business contract (copies acceptable). 7. When any of the items of "4," "5" and "6" above are inadequate, submitted instead must be cargo exchange certification, invoices, government authority certification or other explanatory documents.
--

<申请免除办理认证的书面材料>

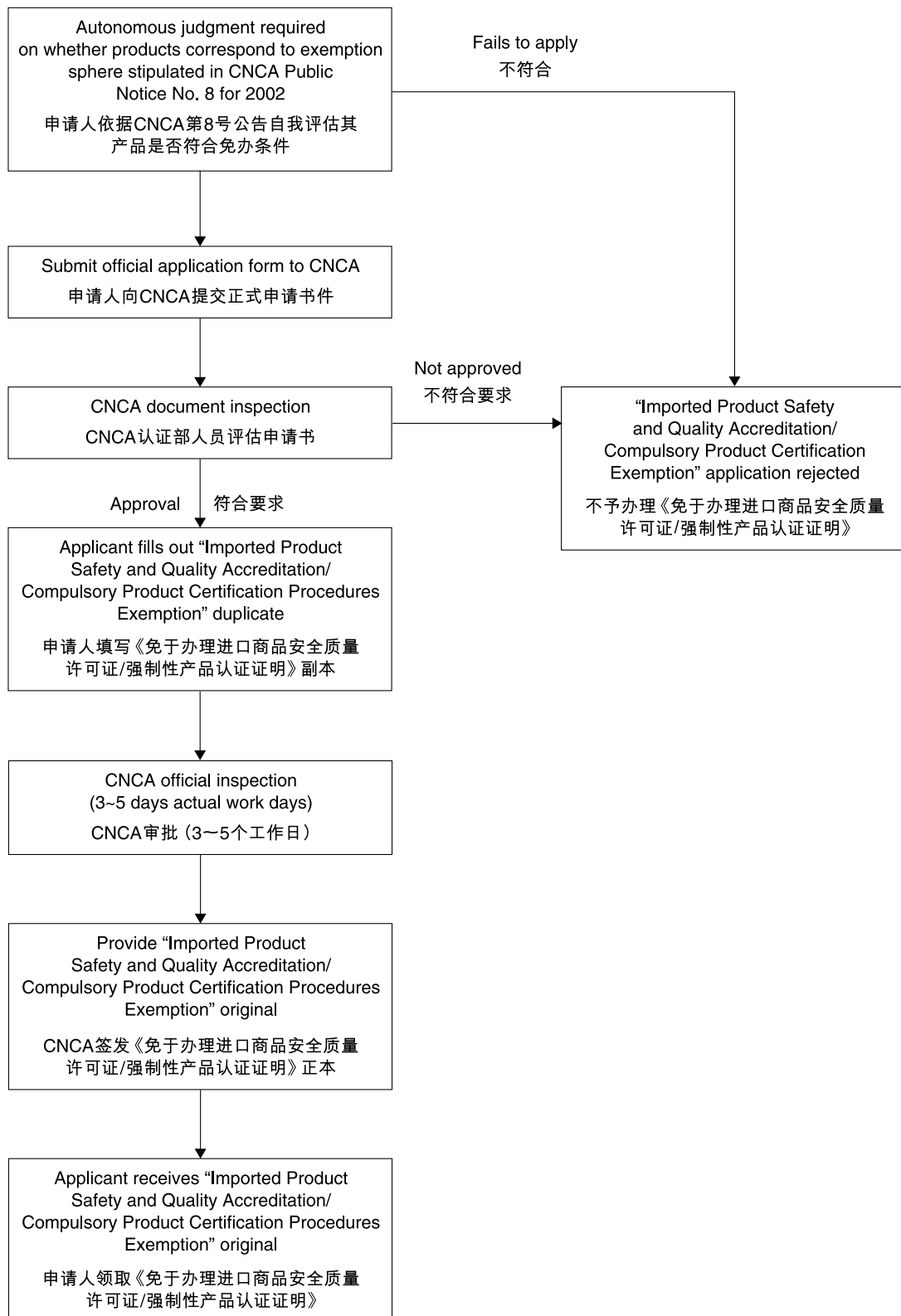
1. 正式申请书 1) 企业的有关介绍、说明 2) 希望免于办理认证的产品的特点 3) 希望免于办理认证原因、理由并提供证明这种原因、理由的依据（例：关税手册等） 4) 说明需办理免办的产品的名称、商标、数量、规格/型号（如数量较多、请附细表。申请进、来料加工、维修备件免办的请提供月份进料和备件清单） 5) 对该产品的安全性能作出保证，自我声明对该产品再生产或使用过程中的安全问题负责 6) 对所提供的资料的真实性、合法性负责。并承诺协助国家认监委对资料真实性的调查。 （如国家认监委认为有必要对资料的真实性进行调查时） 2. 企业工商营业执照的复印件 3. 产品符合性声明、声明该产品符合哪些安全标准要求、并提供相应的检测报告（复印件可、国内外或制造商自己的实验室报告均可） 4. 进口许可证（如该产品需进口许可证、复印件即可） 5. 配额证明（如该产品需配额证明、复印件也可） 6. 商业合同（复印件即以） 7. 如缺少4、5、6中其中一项目、需提供其他材料、如提单、发票及其他官方等证明等说明性文件作为代替。

<Exemption application sequence>

<免于办理认证的程序>

Applicant: Product manufacturer, sales company (representative acceptable)

申请人：生产厂家、销售公司（代理人可）



2. Mitsubishi Electric Corporation Industrial Automation product CCC System target/non-target judgment and response status

Based on the Product Application Sphere of the Primary Compulsory Certification Implementation Product List jointly issued by the General Administration of Quality Supervision, Inspection and Quarantine (AQSIQ) and Certification and Accreditation Administration (CNCA) on July 1, 2002, Mitsubishi Electric Corporation has compiled autonomous judgments and responses on whether specific equipment products are applicable under the CCS System (see p.10).

The following four categories were used as the references for forming judgments on whether products are applicable under the CCC System.

- ① Public Notice No. 33 (issued jointly by AQSIQ and CNCA in December 2001)
- ② CCC System Application Item HS Code (Export Customs Code)
*The HS Code is a supplementary material for helping to determine the application sphere, and cannot be used alone to determine the sphere of such application
- ③ GB Standards (IEC (International Electrotechnical Commission) conformity forms the base, with confirmation by IEC and some deviations also included)
- ④ Items stipulated in the Implementation Rules or within the application sphere of the application standards stipulated in those rules

Reference documents

- *Summary of China's new certification system (electrical product CCC labeling)/Japan Electrical Manufacturers' Association
- *Summary of China's new certification system (electrical product CCC labeling) and electric control equipment /Nippon Electric Control Equipment Industries Association

2. 三菱电机工控产品的CCC认证对象/非对象的判断和对应状况

本说明是以2002年7月1日中国国家质量监督检验检疫总局（AQSIQ）和国家认证认可监督管理委员会（CNCA）联名发行的「第一次强制认证实施产品目录的产品适用范围」为基础，对三菱电机工控产品的CCC认证对象/非对象的判断和对应情况整理而成。（参照P11页）

判断是否是CCC对象品种,可以参考以下的4点来判断。

- ① 第33号公告（2001年12月AQSIQ和CNCA联名于发行）
- ② CCC认证适用品种的HS编号（出口报关准则）
*HS准则是决定适用范围的辅助材料,单纯以HS准则并不能决定适用范围
- ③ GB规格（以IEC调整为基础确认IEC,也有一部分偏离范围的东西）
- ④ 实施细则以及其中规定的适用规格的适用范围中规定的品种

参考文件

- *中国新认证制度的概要（电气产品的CCC标志）/社团法人 日本电机工业协会
- *中国新认证制度的概要（电气产品的CCC标志）和电气控制机器/社团法人 日本电气控制工业协会

Mitsubishi Electric Industrial Automation products CCC System target/ non-target judgment and response status (March 1, 2003)

	Equipment type	Rating, etc.	China HS Code <small>Note 1</small>	GB Rating	See IEC Standards <small>Note 2</small>	CCC System item targeting judgments	Response status
Distribution control products	Motor starter		85369000	GB14048.4-1993	IEC60947-4-1-1990	Targets	New application being made for CCC System certification for electromagnetic contactor/thermal relay combination product.
	Electromagnetic contactors		85369000	GB14048.4-1993	IEC60947-4-1-1990	Targets	CCIB certification previously obtained, CCC System certification completed (December 2002). (S-N10~N400) New application being made for direct current operation format.
	Thermal relays		85363000	GB14048.4-1993	IEC60947-4-1-1990	Targets	CCIB certification previously obtained, CCC System certification completed (December 2002). (TH-N12~N20TA, TH-N12KP~N400RHKP)
	Contactors relays	60V~1000V	85364900	GB14048.5-1993	IEC60947-5-1-1990	Targets	CCIB certification previously obtained, CCC System certification completed (December 2002). (SR-N4, SR-N5, SR-N8) New application being made for direct current operation format.
	Auxiliary contact units	60V~1000V	85369000	GB14048.5-1993	IEC60947-5-1-1990	Targets	CCIB certification previously obtained, CCC System certification completed (December 2002). (UN-AX2, UN-AX4, UN-AX11, UN-AX80, UN-AX150)
	Push buttons, changeover switches		85365000	GB14048.5-1993	IEC60947-5-1-1990	Targets	No plans for acquisition.
	Signal lights		85369000	Unconfirmed	Unconfirmed	Targets	No plans for acquisition.
	Solid-state contactors		85369000	GB14048.6-4-2-1995	IEC60947-4-2-1995	Targets	No plans for acquisition.
	UPS		85044020			Non-targets	
	Transformers		85044020			Non-targets	
	Low-voltage breakers (including short-circuit breakers)		85362000	GB14048.2-1994 GB17701-1993	IEC60947-2-1988 IEC60934-1993	Targets	CCIB certification previously obtained for product sold domestically in China, CCC System certification completed (December 2002). Domestic sales commenced with specialized products. (ACB630~4000AF, NF30~800AF, NV32~250AF) New application being made for ACB4000AF and above, NF1000~1600AF, NV400~800AF, CP30-BA, NF-KC, NV-KC, NF-FA, NV-FA series.
	Power meters					Non-targets	
	Transformers					Non-targets	
	Control meters					Non-targets	
	Indicator meters					Non-targets	
	Transducers					Non-targets	
	Water meters					Non-targets	
	Time switches		85365000	Unconfirmed	Unconfirmed	Targets	No plans for acquisition.
	Multi-circuit power measuring units/ EcoMonitor					Non-targets	
	Energy-saving data collecting servers/ EcoServer					Non-targets	
	B/NET power relays		85365000	Unconfirmed	Unconfirmed	Targets	No plans for acquisition.
	B/NET (other than power relays)					Non-targets	
Rotating machines	Three-phase induction motors	36V and above 750W and under	85015100	GB12350-200	—	Targets	New applications under the CCC System currently being made for the SF-JR, SF-HR Series 2P2.2kW and under, 4P0.75kW and under, 6P0.4kW and under.
		36V and above 750W~1.1kW (at 1500rpm)	85015200	GB12350-200	—	Targets	
	Geared motors	36V and above 750W and under	85015100	GB12350-200	IEC60034-1	Targets	New application being made for CCC System certification.
	Standard single-phase motors	36V and above 1.1kW and under	85014000	Unconfirmed	Unconfirmed	Targets	No plans for acquisition.
	IPM motors		85015100			Judged as non-targets	Confirmation pending.
	Vector motors		85015200				
Factory automation machinery	Inverters		85044090			Non-targets	
	AC servo amplifier		85371010			Non-targets	
	AC servomotors		85015100 85015200			Non-targets	
	Motion controllers		85371010			Non-targets	
	Powder clutches					Non-targets	
	PLCs					Non-targets	
	HMI's					Non-targets	

Note 1. The China HS (Harmonized Standard) Code is determined by customs officials at the point of import into China, with the above estimated on the basis of the HS Code normally used when exporting from Japan.

Note 2. Because there are cases when IEC Standards fail to fully conform with GB standards, the IEC Standards have been used as a reference.

<For updates on the specific CCC System certification acquisition status of Mitsubishi Electric Industrial Automation products, you are requested to consult with the division in charge of those operations at the nearest branch office.

This information is also posted on equipment product websites>

Distribution control equipment/H@ISEIwebHOME page <http://MitsubishiElectric.co.jp/haiseiweb>

Rotating equipment, FA equipment / MELFANSwebHOME page <http://MitsubishiElectric.co.jp/melfansweb>

三菱电机工控产品的CCC认证对象/非对象的判断和对应状况（2003年3月1日现在）

	机种	定格等	中国HS 规则 ^{注1}	GB规格	参照IEC 规格 ^{注2}	CCC 认证品种	对应状况
配电 控制 机器	电动机		85369000	GB14048.4-1993	IEC60947-4-1-1990	对象	正在申请CCC认证的电磁接触器以及配备热继电器的产品
	电磁接触器		85369000	GB14048.4-1993	IEC60947-4-1-1990	对象	过去有CCIB认证, 已经取得CCC认证 (02/12) (S-N10~N400) 直流操作形正在申请CCC认证
	热继电器		85363000	GB14048.4-1993	IEC60947-4-1-1990	对象	过去有CCIB认证, 已经取得CCC认证 (02/12) (TH-N12~N20TA, TH-N12KP~N400RHKP)
	电磁继电器	60V~1000V	85364900	GB14048.5-1993	IEC60947-5-1-1990	对象	过去有CCIB认证, 已经取得CCC认证 (02/12) (SR-N4, SR-N5, SR-N8) 直流操作形正在申请CCC认证
	辅助接点	60V~1000V	85369000	GB14048.5-1993	IEC60947-5-1-1990	对象	过去有CCIB认证, 已经取得CCC认证 (02/12) (UN-AX2, UN-AX4, UN-AX11, UN-AX80, UN-AX150)
	按钮 切换开关		85365000	GB14048.5-1993	IEC60947-5-1-1990	对象	没有取得CCC认证的计划
	信号灯		85369000	未确认	未确认	对象	没有取得CCC认证的计划
	固态接触器		85369000	GB14048.6-4-2-1995	IEC60947-4-2-1995	对象	没有取得CCC认证的计划
	UPS装置		85044020			非对象	
	变压器		85044020			非对象	
	低压断路器 (含漏电断路器)		85362000	GB14048.2-1994 GB17701-1993	IEC60947-2-1988 IEC60934-1993	对象	过去是在中国国内销售的产品取得了CCIB认证已经取得CCC认证 (02/12) 作为专用品开始国内销售 (ACB630~4000AF, NF30~800AF, NV32~250AF) ACB4000AF以上, NF1000~1600AF, NV400~800AF, CP30~BA, NF-KC, NV-KC, NF-FA, NV-FA系列正在申请CCC认证
	电度表					非对象	
	互感器					非对象	
	管理用仪表					非对象	
	指示计器					非对象	
	变送器					非对象	
	水量计					非对象	
	计时开关		85365000	未确认	未确认	对象	没有取得CCC认证的计划
	多电路电力测量单元/ EcoMonitor					非对象	
	节能数据收集器/ EcoServe					非对象	
	B/NET能量继电器		85365000	未确认	未确认	对象	没有取得CCC认证的计划
	B/NET (能量继电器以外)					非对象	
回 转 机 器	三相诱导电动机	36V以上 750W以下	85015100	GB12350-200	—	对象	SF-JR, SF-HR系列的2P2.2kW以下, 4P0.75kW以下, 6P0.4kW以下正在申请CCC认证
		36V以上 750W~1.1kW (1500rpm时)	85015200	GB12350-200	—	对象	
	齿轮传动电动机	36V以上 750W以下	85015100	GB12350-200	IEC60034-1	对象	正在申请CCC认证
	标准单相电动机	36V以上 1.1kW以下	85014000	未确认	未确认	对象	没有取得CCC认证的计划
	IPM电动机		85015100			判断非对象	确认中
	矢量电动机		85015200				
F A 机 器	变频器		85044090			非对象	
	AC伺服放大器		85371010			非对象	
	AC伺服电动机		85015100 85015200			非对象	
	运动控制器		85371010			非对象	
	粉末离合器					非对象	
	可编程控制器					非对象	
	人机界面					非对象	

注1 中国的HS法规是向中国进口时中国的报关者决定的, 以上是从日本出口时按照通常使用的HS法规推定的。

注2 IEC规格是根据机种对GB规格部分不合适时就参照IEC规格。

<关于三菱电机工控产品的具体的CCC认证取得的情况请照会最近的分公司担当部门。请浏览工控产品相关的网站>

配电控制机器/HAISEIwebHOME: <http://MitsubishiElectric.co.jp/haiseiweb>

回转机器/FA机器/MELFANSwebHOME: <http://MitsubishiElectric.co.jp/melfansweb>

Global Customer Support Network

全球用户服务网络

Mitsubishi Global FA Centers

– Engineering support and reliable service for the internationally minded –

对应客户的全球化趋向，三菱全球性FA中心将以高超的技术，
可信赖的服务及时地向客户提供周到的技术和服务支持。



North America 北美

North America FA Center / 北美FA中心 (FA) (CNC)

Mitsubishi Electric Automation, Inc.

500 Corporate Woods Parkway, Vernon Hills, IL 60061, USA

TEL: +1-847-478-2100 FAX: +1-847-478-0328

※Please contact nearest sales office for electrical-discharge machines and laser processing machines.

※关于放电加工机，激光加工机将另外通知。

California-South Office

5665 Plaza Drive, Cypress, CA 90630, USA

TEL: +1-714-220-2500 FAX: +1-714-229-3897

Ohio-South Office

7566 Paragon Road, Centerville, OH 45459, USA

TEL: +1-937-291-4600 FAX: +1-937-291-4606

Georgia Office

2810 Premiere Parkway, Suite 400, Duluth, GA 30097, USA

TEL: +1-678-258-4500 FAX: +1-678-258-4504

New Jersey Office

Vantage Court South, 200 Cottontail Lane, Somerset, NJ 08873, USA

TEL: +1-732-560-4500 FAX: +1-732-560-4535

Canada-Ontario Office

4299 14th Avenue, Markham, Ontario L3R 0J2, CANADA

TEL: +1-905-475-7728 FAX: +1-905-475-7935

Mexico-Texas Office

1000 Nolen Drive, Suite 200, Grapevine, TX 76051, USA

TEL: +1-817-416-9767 FAX: +1-817-416-5000

Middle South America 中南美 (FA)

MELCO-TEC Repres. Comercial e Assesoria Tecnica Ltda.

Av. Paulista, 1471-Conj. 308 CEP 01311-200 Sao Paulo, Brazil

TEL: +55-11-283-2423 FAX: +55-11-288-3047

Europe 欧洲大陆

Europe FA Center / 欧洲FA中心 (FA) (CNC) (EDM)

Mitsubishi Electric Europe B.V. German Branch

Goteaer Strasse 8, 40880 Ratingen, Germany

TEL: +49-2102-486-0 FAX: +49-2102-486-7170

East Office

DGZ-Ring Nr.7, D-13086 Berlin, Germany

TEL: +49-30-47-10-53-2 FAX: +49-30-47-15-47-1

North/West Office

Revierstrasse 5, D-44379 Dortmund, Germany

TEL: +49-231-96-70-41-0 FAX: +49-231-96-70-41-41

South Office

Kurze Str. 40, D-70794 Filderstadt-Bonlanden, Germany

TEL: +49-711-770598-0 FAX: +49-711-770598-79

Middle Office

Brunnenweg 7, D-64331 Weiterstadt, Germany

TEL: +49-6150-13-99-0 FAX: +49-6150-13-99-99

Bavaria Office

Am Soeldnermoos 8, D-85399 Hallbergmoos

TEL: +49-811-99874-0 FAX: +49-811-99874-10

Mitsubishi Electric Europe B.V. Spanish Branch (FA)

Carretera de Rubi 76-80, E-08190 Sant Cugat del Valles, Barcelona, Spain

TEL: +34-93-565-3131 FAX: +34-93-489-1579

Mitsubishi Electric Europe B.V. Italian Branch (FA) (CNC)

Centro Dir. Colleoni, Palazzo Perseo-Ingresso 2, Via Paracelso 12, 20041 Agrate Brianza, Italy

TEL: +39-039-60531 FAX: +39-039-6053312

Mitsubishi Electric Europe B.V. French Branch (FA) (CNC)

25, Boulevard des Bouvets, 92741 Nanterre Cedex, France

TEL: +33-1-55685628 FAX: +33-1-55685685

Mitsubishi Electric Europe B.V. Moscow Liaison Office (FA)

Kosmodamianskaya nab., 52, Building 5113054, Moscow, Russia

TEL: +7-95-721-2070 FAX: +7-95-721-2071

UK 英国

UK FA Center / 英国FA中心 (FA) (CNC)

Mitsubishi Electric Europe B.V. UK Branch

Travellers Lane, Hatfield, Herts., AL10 8XB, UK

TEL: +44-1707-278990 FAX: +44-1707-278992

North America FA Center

Service Products: **FA** Automation Equipment
(PLC, HMI, Inverter, AC Servo,
Distribution Control Equipment)

CNC Computerized Numerical Controller

EDM Electrical-Discharge Machine

LP Laser Processing Machine

服务机种: **FA** FA(工控)产品
(可编程控制器, 人机界面, 变频调速器,
交流伺服系统, 配电控制产品)

CNC 数控系统

EDM 放电加工机

LP 激光加工机

China 中国

Shanghai FA Center / 上海FA中心 **FA** **CNC** **EDM**

Ryoden Automation (Shanghai) Ltd.

2/F., Block 5, 103 Cao Bao Road, Shanghai 200233, China

TEL: +86-21-6484-9360 FAX: +86-21-6484-9361

Beijing FA Center / 北京FA中心 **FA** **CNC** **EDM**

Ryoden Automation (Shanghai) Ltd. Beijing Office

9/F., Office Tower 1, Henderson Center, 18 Jianguomennei Dajie,
Dongcheng District, Beijing 100005, China

TEL: +86-10-6518-8830 FAX: +86-10-6518-8030

Hong Kong 香港

Hong Kong FA Center / 香港FA中心

Ryoden Automation Ltd.

[FA(工控)产品] **FA**

10/F., Manulife Tower, 169 Electric Road, North Point, Hong Kong

TEL: +852-2887-8870 FAX: +852-2887-7984

[机电一体化产品] **CNC** **EDM** **LP**

Unit A, 25/F., Ryoden Industrial Center, 26-38 Ta Chuen Ping Street,
Kwai Chung, New Territories, Hong Kong

TEL: +852-2619-8588 FAX: +852-2784-1323

ASEAN 东南亚地域

ASEAN FA Center / 东南亚统辖FA中心 **FA** **CNC** **EDM** **LP**

Mitsubishi Electric Asia Pte, Ltd.

307 Alexandra Road #05-01/02

Mitsubishi Electric Building, Singapore 159943

TEL: +65-6470-2480 FAX: +65-6476-7439

Korea 韩国

Korea FA Center / 韩国FA中心 **FA** **CNC** **EDM** **LP**

Han Neung Techno Co., Ltd.

Dongseo Game Channel Bldg. 2F 660-11, Deungchon-Dong,

Kangseo-Ku, Seoul 157-030, Korea

TEL: +82-2-3660-9607 FAX: +82-2-3663-0475

Taiwan 台湾

Taipei FA Center / 台北FA中心 **CNC**

Mitsubishi Electric Taiwan Co., Ltd.

3FL. No.122 Wu Kung 2nd RD, Wu-Ku Hsiang, Taipei Hsien, Taiwan

TEL: +886-2-2299-3060 FAX: +886-2-2298-1909

※Even support AC servos ※交流伺服系统也能对应

Setsuyo Enterprise Co., Ltd. **FA**

6F No.105 Wu Kung 3rd RD, Wu-Ku Hsiang, Taipei Hsien, Taiwan

TEL: +886-2-2299-2499 FAX: +886-2-2299-2509

Taichung FA Center / 台中FA中心 **CNC**

Mitsubishi Electric Taiwan Co., Ltd.

No.8-1 Gong Yeh 16th RD. Taichung Industrial Park, Taichung City, Taiwan

TEL: +886-4-2359-0688 FAX: +886-4-2359-0689

※Even support AC servos ※交流伺服系统也能对应

Setsuyo Enterprise Co., Ltd. **FA**

7F-7, No.77, Zheng Bei 1st RD, Taichung City, Taiwan

TEL: +886-4-2258-1027 FAX: +886-4-2252-0967

※Please contact nearest sales office for electrical-discharge machines
and laser processing machines.

※关于放电加工机, 激光加工机将另外通知。

Australia 澳洲

Mitsubishi Electric Australia Pty. Ltd. **FA**

348 Victoria Road, Postal Bag No.2, Rydalmere, N.S.W 2116, Australia

TEL: +61-2-9684-7777 FAX: +61-2-9684-7245

Black Diamond Technologies Limited **FA**

1 Parliament Street, Lower Hutt, Wellington, New Zealand

TEL: +64-4-569-7350 FAX: +64-4-569-3623

※For details, please refer for "Mitsubishi Global Service" leaflet.

※详细内容, 请参照 "Mitsubishi Global Service" 样本。

